



# GEMINI™

## Twin Liner Litter Bin

USER INSTALLATION INSTRUCTIONS AND FIXING INSTRUCTIONS




**IMPORTANT : PLEASE ENSURE THAT ALL RELEVANT PERSONNEL READ THE POINTS LISTED WITHIN THIS LEAFLET AND THAT A COPY IS GIVEN TO STAFF INVOLVED WITH THE INSTALLATION AND MAINTENANCE OF THIS PRODUCT.**

- A planned maintenance schedule of regular inspection is recommended, replacing components as necessary.
- Replacement components are available direct from GLASDON.
- GLASDON cannot be held responsible for claims arising from incorrect installation, unauthorised modifications or misuse of the product.

Issue 3 December 2005 Stock no. C000/0290  
© Copyright December 2005

Glasdon reserve the right to alter specification without prior notice.

 Glasdon® AND GEMINI™ ARE TRADEMARKS OR REGISTERED TRADEMARKS OF GLASDON GROUP OR ITS SUBSIDIARIES IN THE U.K. AND OTHER COUNTRIES



**Glasdon U.K. Limited**  
Preston New Road  
BLACKPOOL  
Lancashire  
FY4 4UL  
Tel: 01253 600410  
Fax: 01253 792558  
e-mail: sales@glasdon-uk.co.uk  
web: www.glasdon.com

# GEMINI TWIN LINER LITTER BIN

## FIREXPIRE®

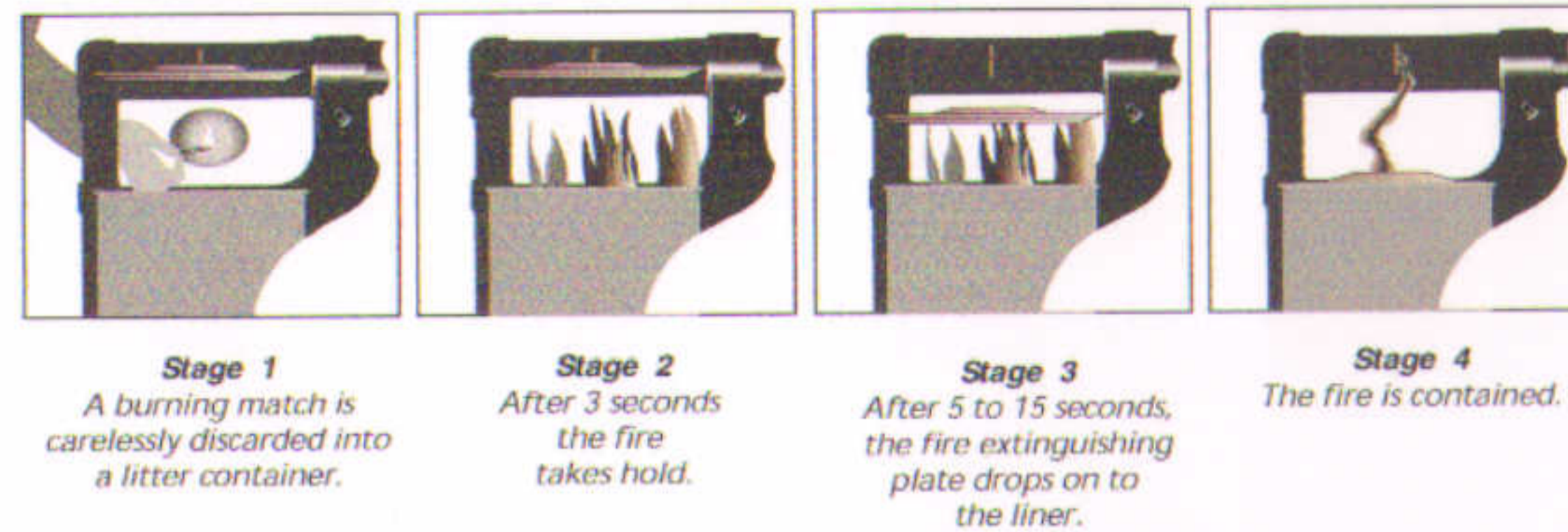
### RE-ASSEMBLY AND MAINTENANCE

Please note: Firexpire is an effective low cost auxiliary device and must never replace primary fire prevention measures. Obstructions preventing the plate dropping may adversely affect the function of the unit, and as many Firexpire devices are used in unsupervised locations, regular inspection and immediate replacement of any damaged or distorted components is essential.

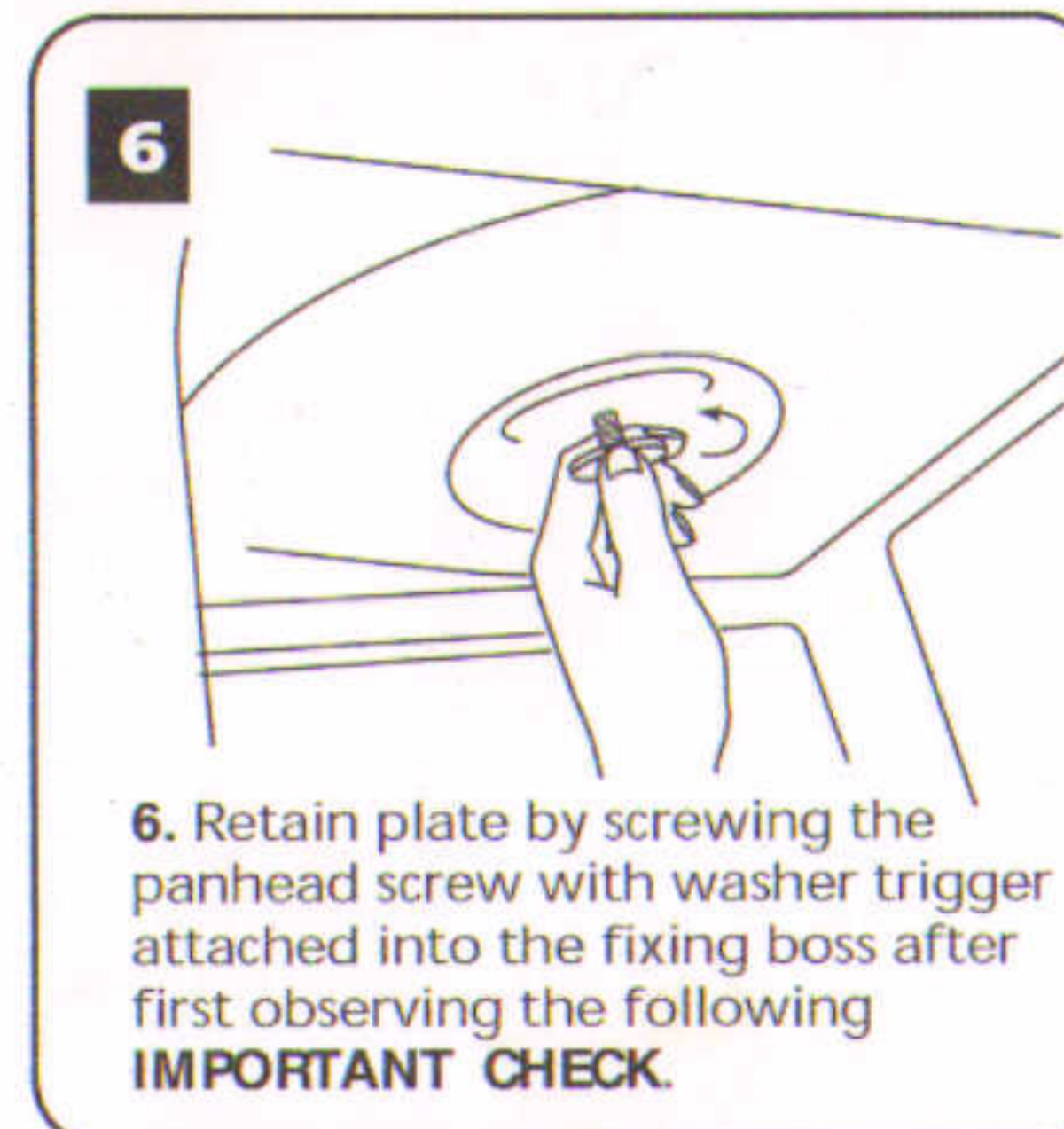
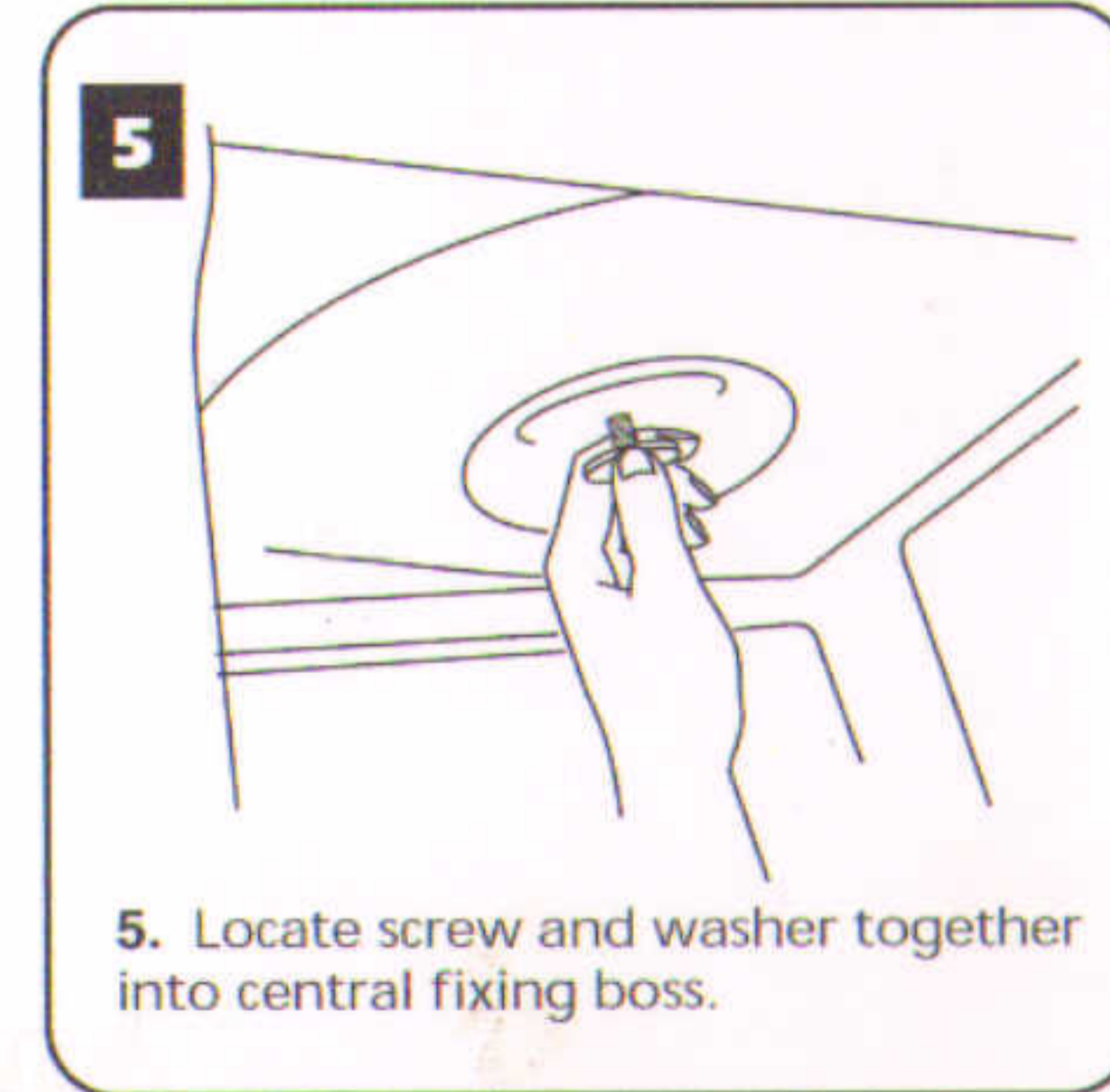
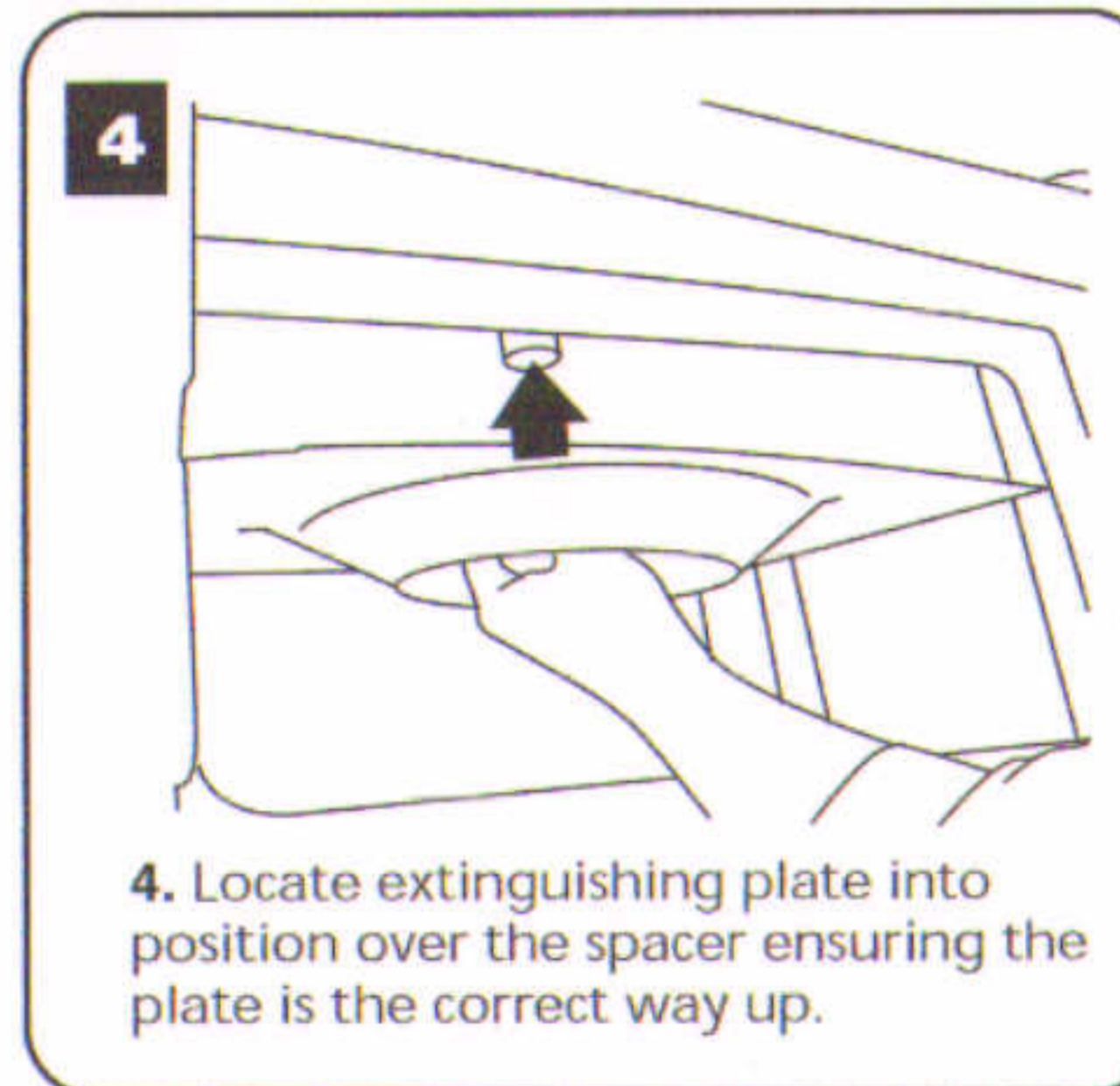
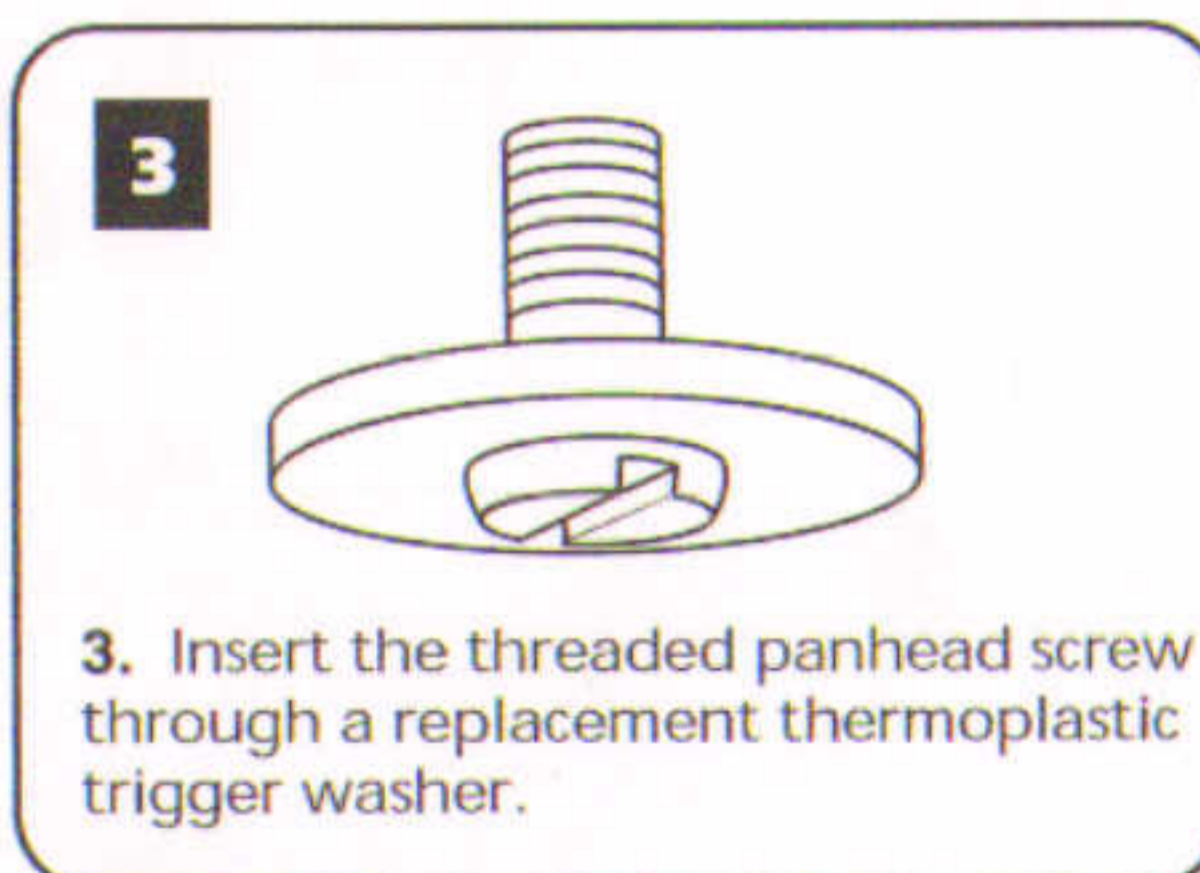
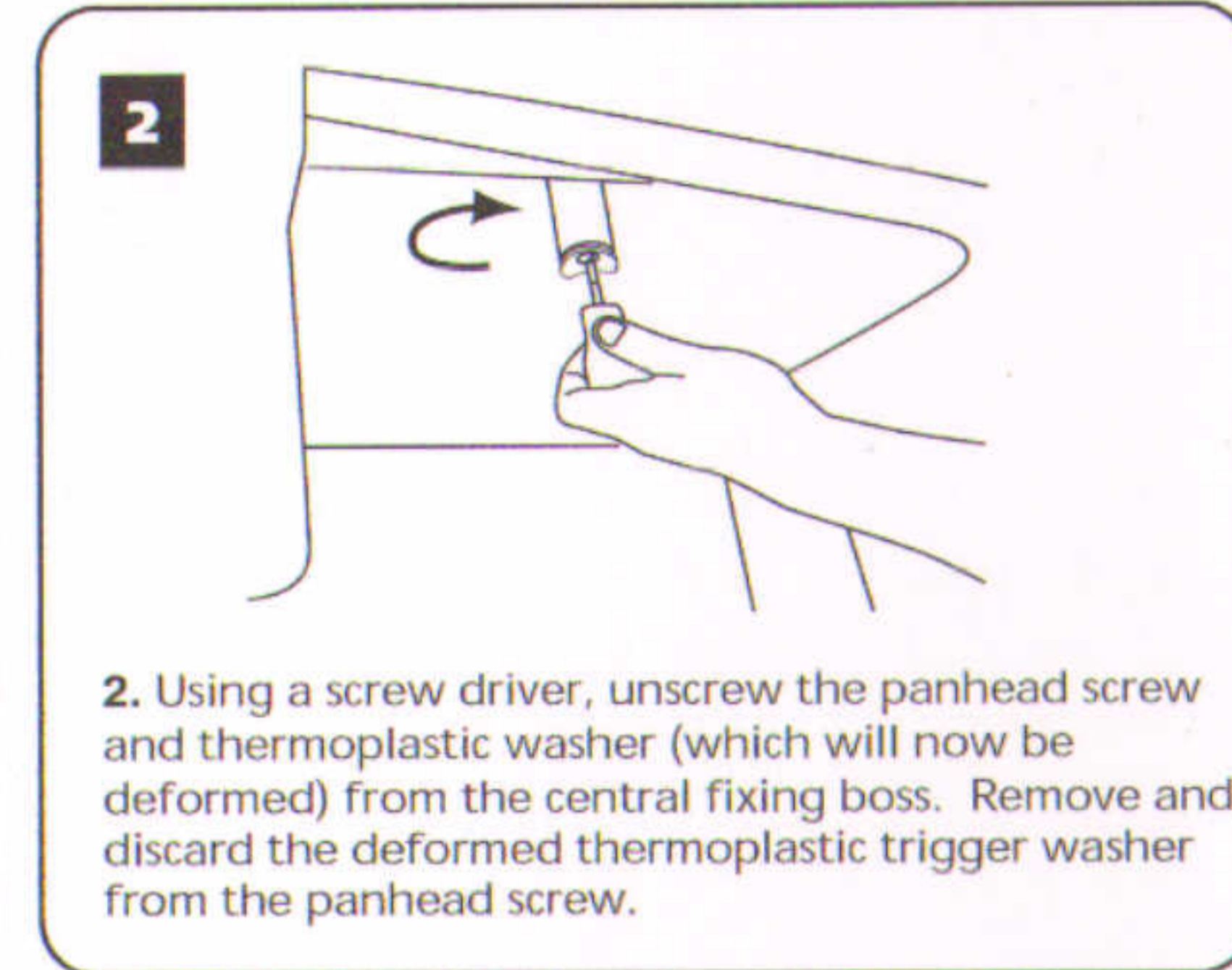
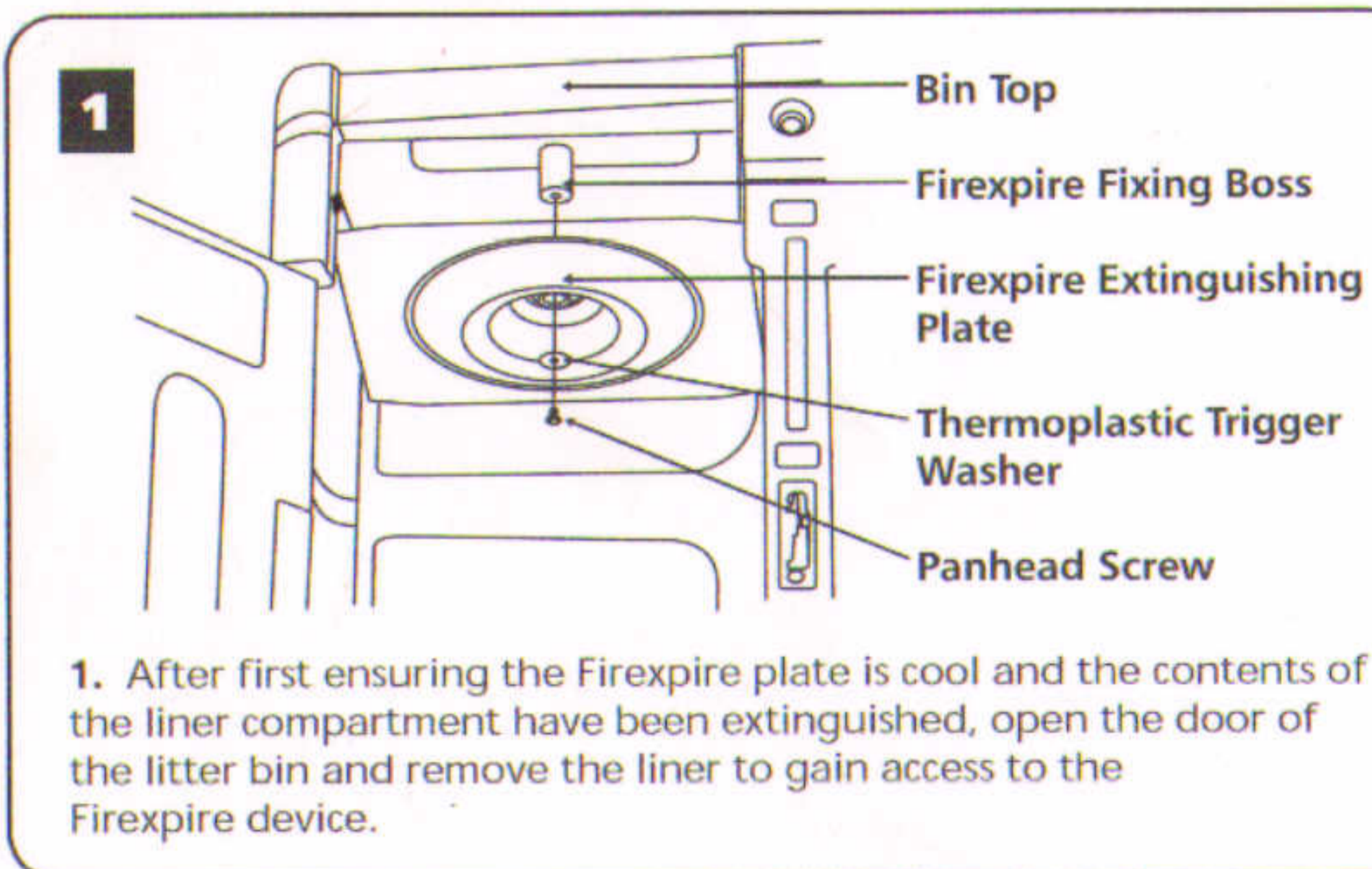
**HOW IT WORKS**  
The Firexpire system includes three important components.

1. Firexpire extinguishing plate
2. Thermoplastic trigger washer
3. Panhead screw

It works by having a plate suspended above aperture height secured by a panhead screw and a thermoplastic trigger washer. When a fire occurs inside the liner, the thermoplastic washer responds by releasing the Firexpire plate. This then drops, sealing the liner and starving the fire within of oxygen, thus snuffing out the fire.



#### INSTRUCTIONS TO REPLACE TRIGGER IF A FIRE HAS ACTIVATED PLATE.



**IMPORTANT CHECK**  
Ensure Firexpire plate is absolutely central before tightening screw.

## USER INSTALLATION INSTRUCTIONS AND FIXING INSTRUCTIONS FOR PAVING AND CONCRETE FOUNDATION

THE BIN MUST BE SITED ON FLAT AND LEVEL CONCRETE FOUNDATION/CONCRETE PAVING TO ENSURE CORRECT INSTALLATION

#### Parts List:

- Concrete Fixing Bolt (M10 x 120mm) c/w Nut and Washer x 4
- Pavement Fixing Bolt (M10 x 75mm) c/w Nut and Washer x 4
- Fixing Washer x 4

#### Equipment Required for Installation:

- Spanner/Tube Spanner 17mm
- Appropriate electric Drill
- M10 masonry Drill Bit

Both concrete foundation fixing bolts and concrete pavement fixing bolts are supplied as standard with this bin. Please note that the distance from the edge of the concrete base or paving slab to the centre of the fixing bolt must not be less than 100mm.

Existing sites or pre-prepared sites must have a concrete foundation depth of at least 150mm.

#### FIXING METHOD (A) :- CONCRETE FOUNDATION

PERMANENTLY SITED ONTO A PRE-PREPARED CONCRETE GROUND SITE (20-30N/mm sq.) UTILISING THREE M10 x 120mm LONG CONCRETE FIXING BOLTS.

1. Position bin onto sited area ensuring it is the correct distance away from the edge of the concrete and is in the correct orientation with regard to the apertures.
2. From the inside of the bin mark hole positions onto the concrete through the fixing holes in the base of the bin with a 10mm diameter masonry drill. Remove the bin.
3. Using a 10mm diameter masonry drill, drill and clean out anchor holes to a minimum depth of 130mm. Position the bin back over the drilled holes.
4. Assemble the ground bolts as shown in diagram 1 ensuring only 2 or 3 threads are showing above the nut. Drive the ground bolts through the holes in the base of the bin and into the holes in the concrete.
5. Tighten nut with correct spanner until the fixings are secure. Max. recommended torque setting 20lbs/ft (20Nm).
6. In the event of the bin being removed, the fixing bolts can be driven down into the concrete to ground level.

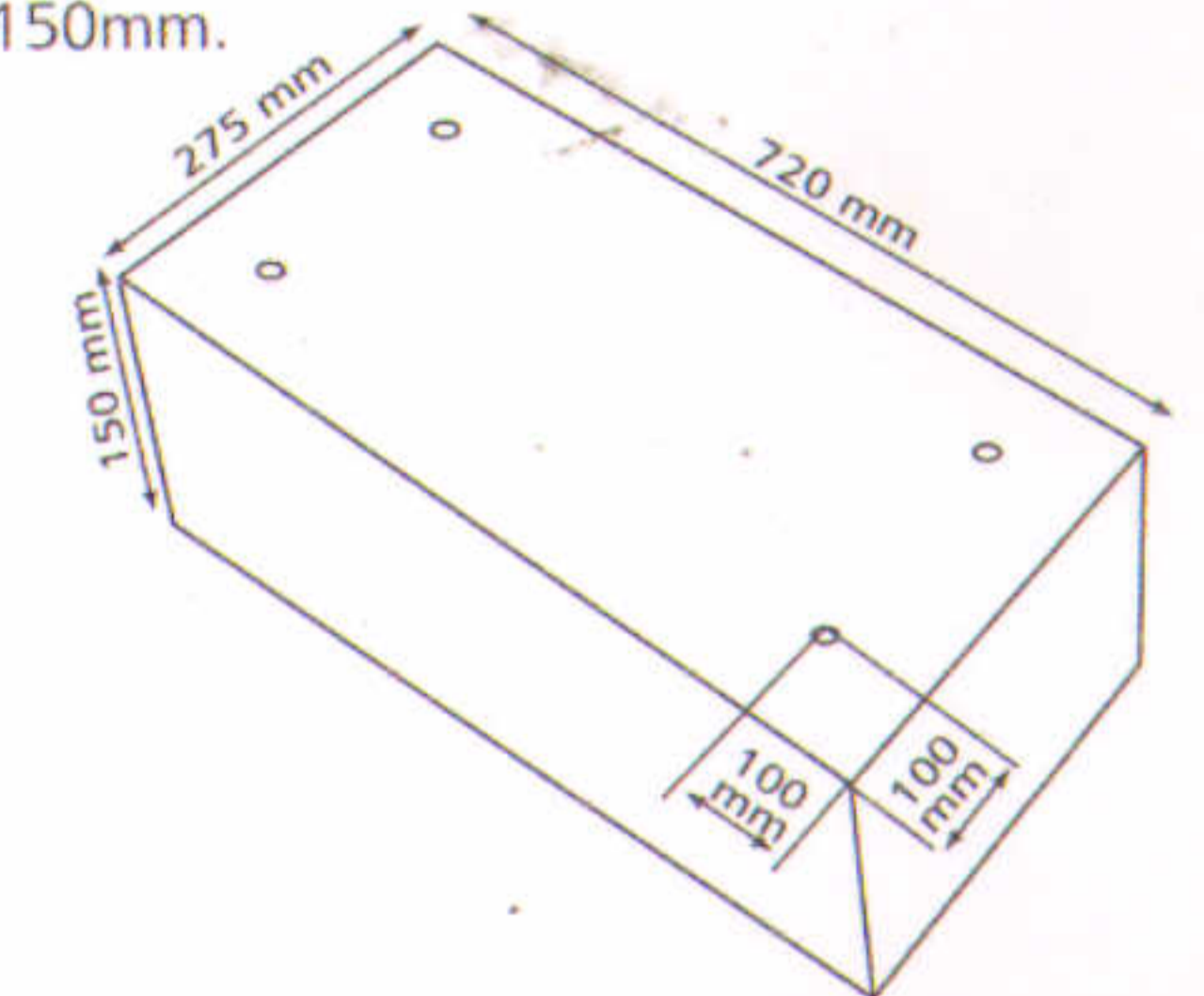
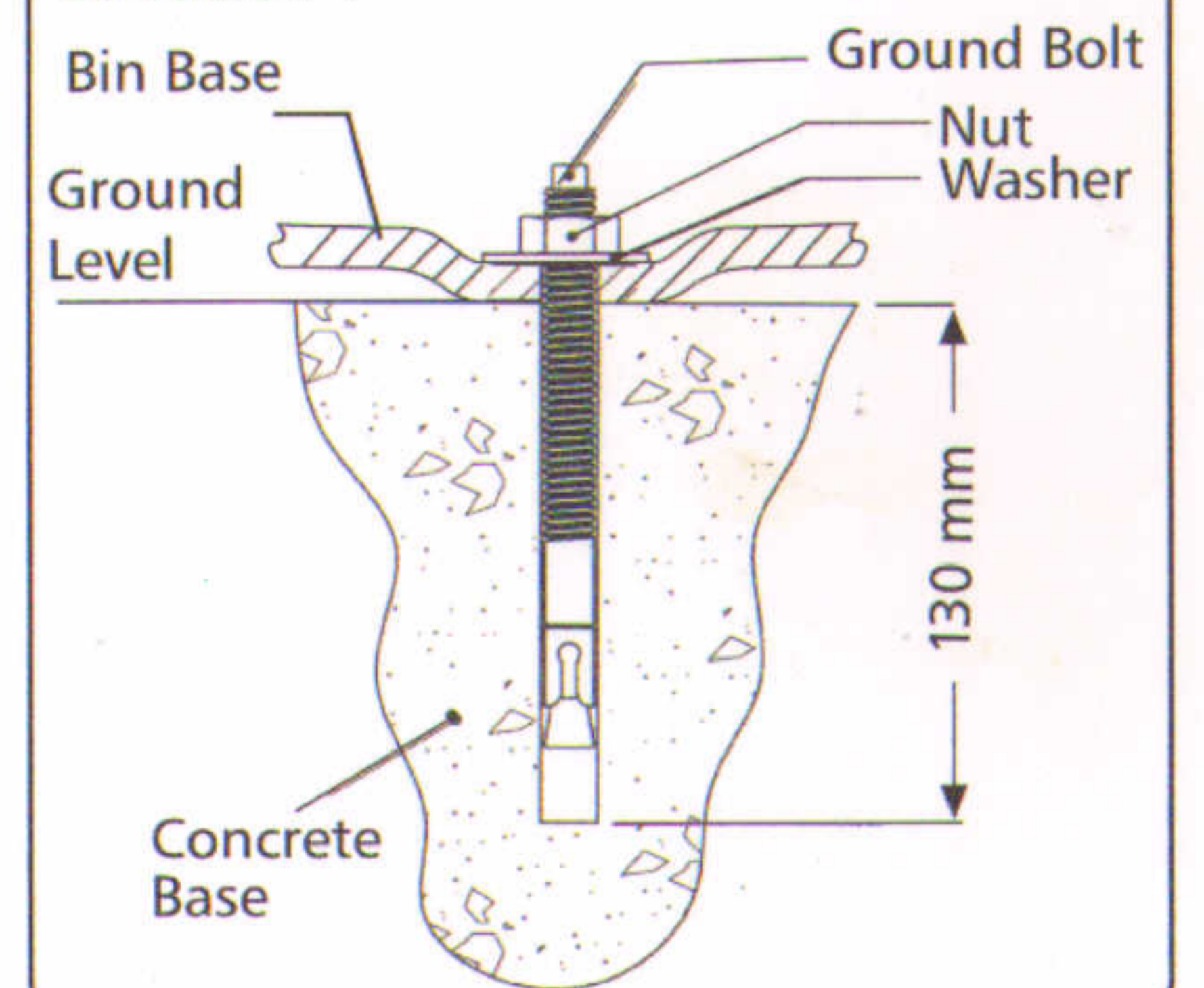


DIAGRAM 1

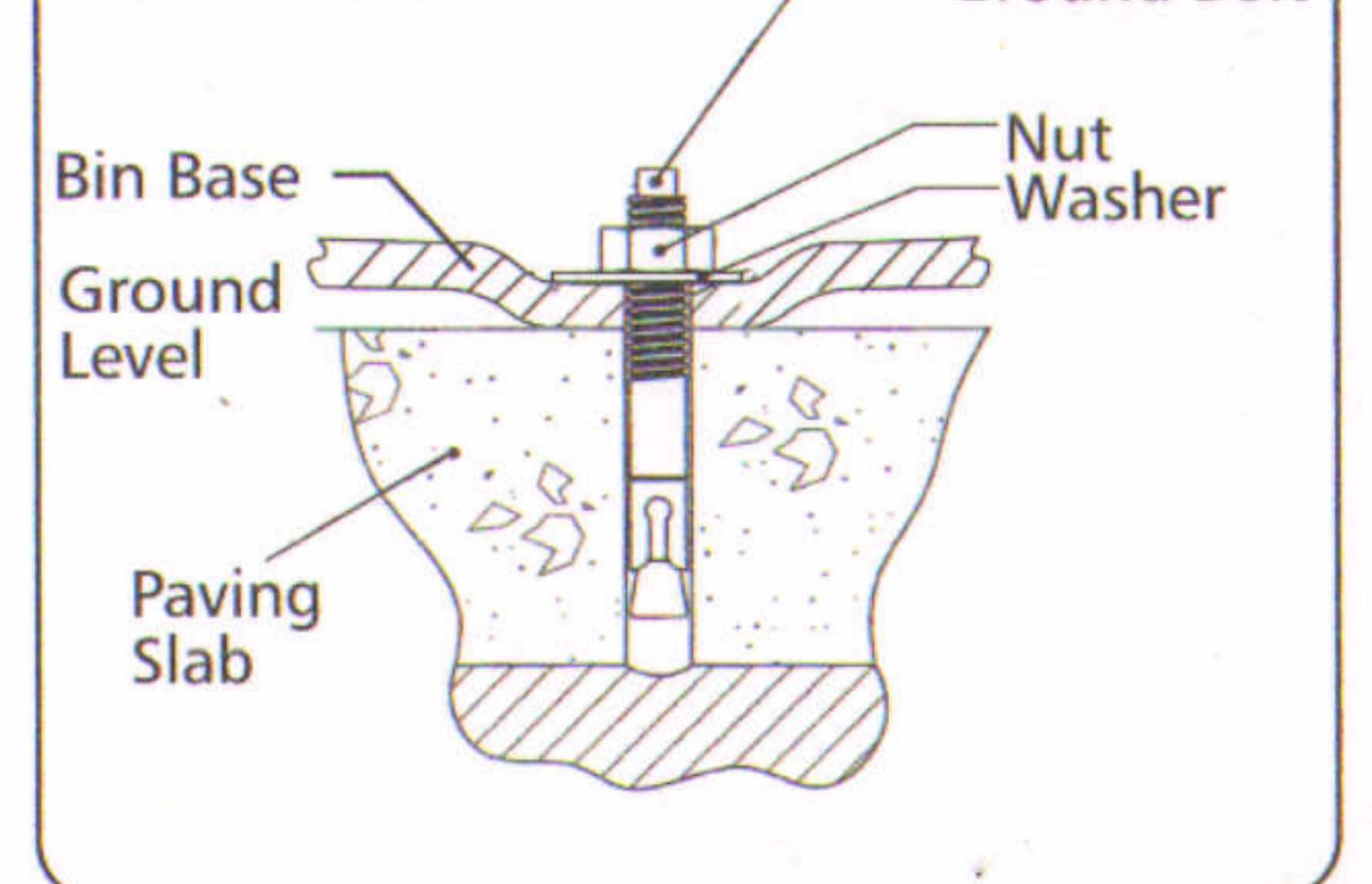


#### FIXING METHOD (B) :- CONCRETE PAVEMENT

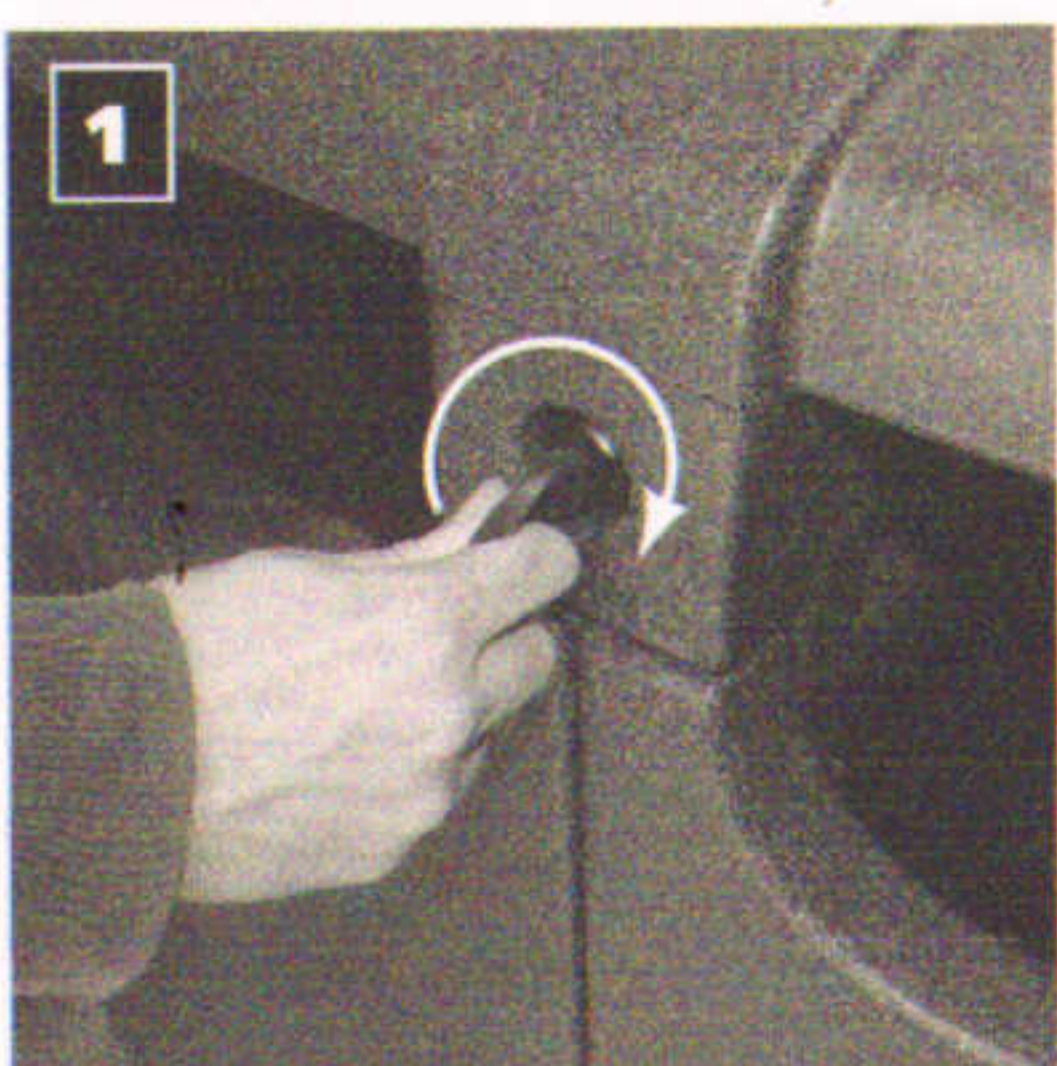
PERMANENTLY SITED ONTO PRE-PREPARED CONCRETE PAVING GROUND SITE (20-30 N/mm sq.) UTILISING THREE M10 x 75mm LONG PAVEMENT FIXING BOLTS.

1. Position bin onto sited area ensuring it is the correct distance away from the edge of the concrete and is in the correct orientation with regard to the apertures.
2. From the inside of the bin mark hole positions onto the paved area through the fixing holes in the base of the bin with a 10mm diameter masonry drill. Remove the bin.
3. Using a 10mm diameter masonry drill, drill anchor holes through the paving slab. Position the bin back over the drilled holes.
4. Assemble the ground bolts as shown in diagram 2 ensuring only 2 or 3 threads are showing above the nut. Drive the ground bolts through the holes in the base of the bin and into the holes of the paving slab.
5. Tighten nut with correct spanner until the fixings are secure. Max. recommended torque setting 20lbs/ft(27Nm).
6. In the event of the bin being removed, the fixing bolts can be driven down into the paving slab to ground level.

DIAGRAM 2



# User Instructions for Basic Operations



## A OPENING THE BIN

- 1 Locate key into lock and turn clockwise to unlock the doors (see DIAGRAM 1).
- 2 The right hand door must be opened first as it locks the left hand door into place (see DIAGRAM 2)



## B CLOSING THE BIN

- 3 The left hand door must be closed first then slam the right hand door to lock (see DIAGRAM 2). Once closed, ensure the bin is fully locked by pulling on the right hand door.

## C REMOVING / INSTALLING LINER

- 4 To remove or install the liner, position hand on the handle (see DIAGRAM 3 metal liner / DIAGRAM 4 plastic liner). The liner can slide either outwards to remove the liner or inwards to install the liner. If the bin has a recycling panel the panel may be tilted upwards to aid removal of the liner (see DIAGRAM 5). Once the liner has been emptied and placed back in the bin ensure that the panel is pushed back into position before closing the door (see DIAGRAM 6).



## D FITTING A PLASTIC SACK

- 1 A new plastic sack should be dropped into the sack retention frame and placed over the rear of the sack retention band (see DIAGRAM 7).
- 2 Stretch the opposite side of the plastic sack over the front sack retention band and push the sack retention frame back to an upright position (see DIAGRAM 8).



# User Instructions for Basic Operations



## E REMOVING A PLASTIC SACK

- 1 Tilt the sack retention frame forward and start to remove the plastic sack (see DIAGRAM 9).
- 2 Lift the front sack retention band upwards and slide the plastic sack away from the bin. The plastic sack can be tied up and disposed of (see DIAGRAM 10).



## F EMPTYING THE SIDE ASHTRAY

- 1 Remove the litter liner and place your hand inside bin. Push the metal catch clockwise 90 degrees to release the ashtray liner (see DIAGRAM 11).
- 2 The ashtray liner can now be pulled away and emptied (see DIAGRAM 12).
- 3 To replace the ashtray liner simply place it into its original position and push the catch anti clockwise 90 degrees to re-secure the unit.



## G EMPTYING THE HOOD MOUNTED ASHTRAY WITH QUICK-RELEASE™ EMPTYING MECHANISM

- 1 Quick-Release Emptying Mechanism is a hygienic, highly effective, time-saving aid to smoking waste collection. To ensure safe operation at all times, routine care must be taken to remove any debris which could impede the return of the Ashtray base to its fully closed position (see DIAGRAM 13).



## 13 IMPORTANT SAFETY INFORMATION

For safe operation ensure that the ashtray base flap is free from debris and fully closed after emptying.



STAGE 1. To empty, pull down pivoting ashtray base.



STAGE 2. Side handles keep hands clear of contents.



STAGE 3. Cigarette waste can be released into main litter liner. The pivoting ashtray base flips back into position.



## H CLEANING YOUR GEMINI LITTER BIN

Wash with 10% solution of mild detergent in warm water using a soft brush followed by a rinse with clean water. DO NOT USE abrasive cleaners.